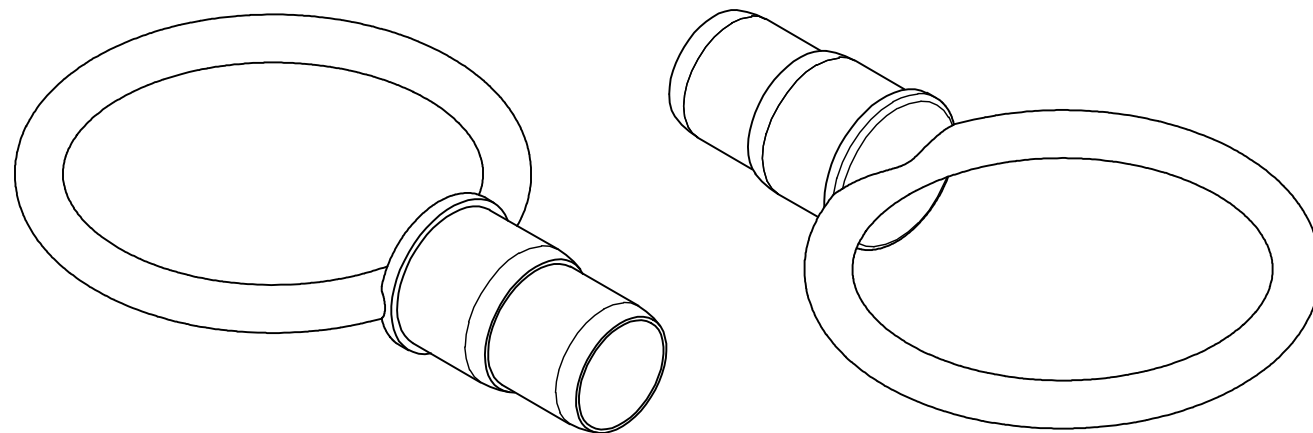
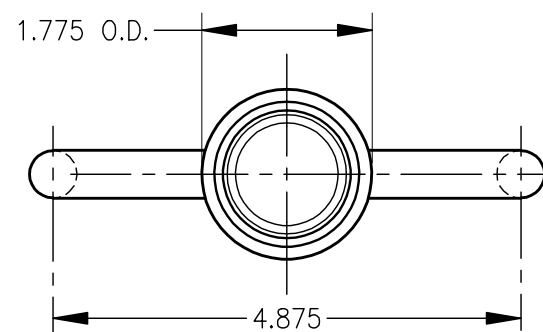


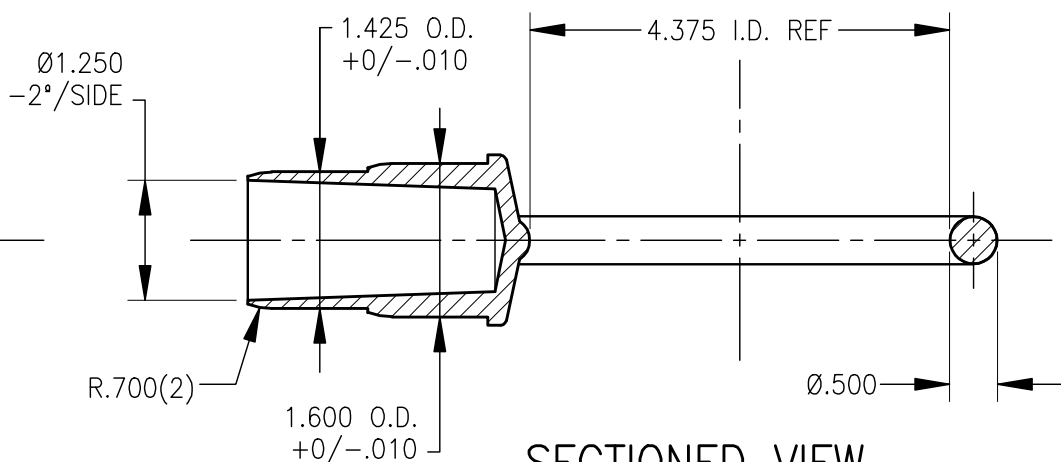
TOP VIEW



ISOMETRIC VIEWS



FRONT VIEW



SECTIONED VIEW

NOTES

1. DIMENSIONS ARE TAKEN AT THE PARTING LINE WHERE APPLICABLE. DESIGN CONTROLLED BY AUTOCAD MODEL Cone Ring\_Rev 02.dwg. REFER TO MODEL FOR ALL GEOMETRY.
2. CRITICAL DIMENSIONS ARE THE 1.425 AND 1.600 OUTSIDE DIAMETERS AS TOLERANCED--THESE SURFACES MUST BE FREE OF ANY FLASH.
3. VOLUME =5.131 IN3 =84.08 CM3 =166.8 LB/M @ .90 S.G.
4. (2) REQUIRED FOR EACH CONE BAR ASSEMBLY, P/N 03-824CB
5. FOR SPECIFICATIONS OF THE EXTRUDED TELESCOPING TUBING, REFER TO P/N's 13-03-824T3 AND T4, INNER AND OUTER TUBES.

REV	REF	REVISION DESCRIPTION	BY	DATE
03	----	RELEASED FOR PRODUCTION, NEW P/N, REVISED NOTES	JIL	1-24-2007
02	----	REVISED TRANSITION, ADDED DIMENSIONS	JIL	6-2-2005
01	----	RELEASED FOR QUOTES	JIL	5-15-2006

MATERIAL	COLOR AND FINISH	THIRD ANGLE PROJECTION
POLYPROPYLENE	ORANGE	
<small>THIS DRAWING IN DESIGN AND DETAIL IS THE PROPERTY OF CORTINA TOOL &amp; MOLDING COMPANY. MATERIAL DESCRIBED AND INFORMATION CONVEYED MAY NOT BE COPIED, DIVULGED TO OTHERS OR USED FOR MANUFACTURING OR ANY OTHER PURPOSE WITHOUT CONSENT. ALL DESIGN AND INVENTION RIGHTS RESERVED.</small>		TOLERANCES UNLESS OTHERWISE SPECIFIED 2 PLACE DECIMALS ± N/A 3 PLACE DECIMALS ± N/A ANGULAR DIMENSIONS ± N/A

**Cortina** A Cortina Company  
**Safety Products Group**  
 REGISTERED ISO 9002  
 www.cortinaco.com  
 10706 WEST GRAND AVENUE, FRANKLIN PARK, IL 60131

RING, CONE, FOR TELESCOPING TUBING		DRAWING NUMBER / PART NUMBER		REVISION
USED W/ 96" TELESCOPING CONE BAR		13-03-824CR		03
SCALE AT B SIZE 1 = 2	DRAFTER	DATE	CHECKER	DATE
	JIL	5-15-2006	MT	5-15-2006