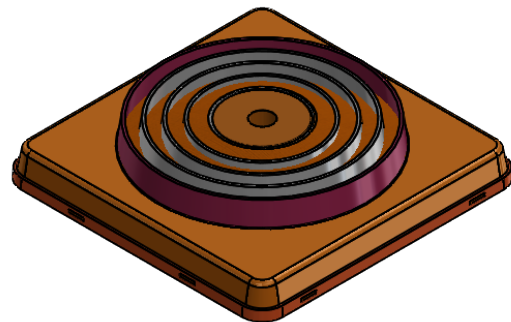
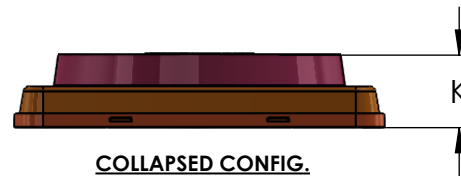
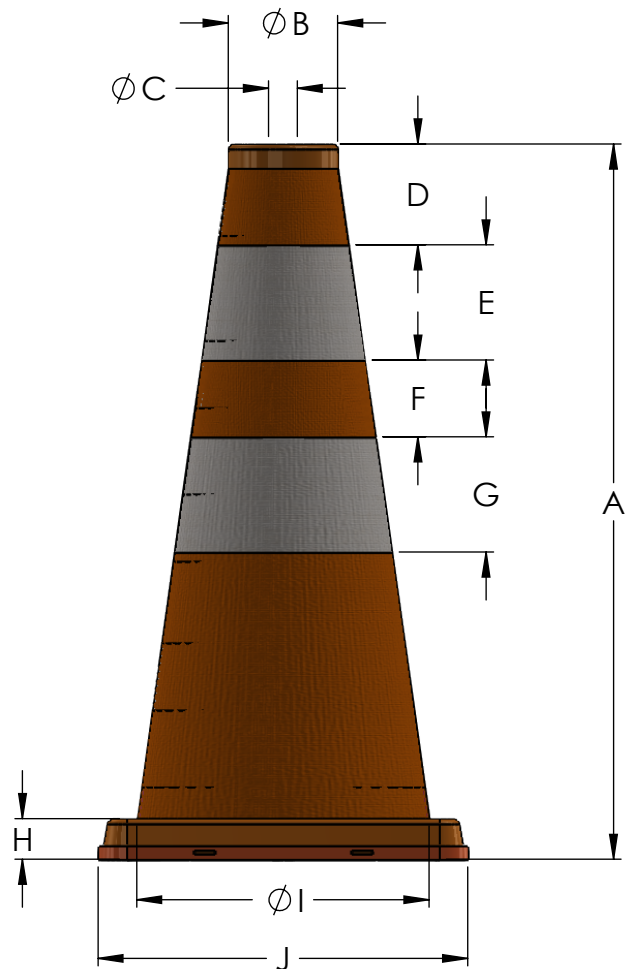



**SPECIFICATIONS**

	18"	28"	30"
<b>A</b>	18.00"	28.00"	30.00"
<b>B</b>	1.63"	1.83"	1.88"
<b>C</b>	.75"	.75"	.75"
<b>D</b>	4.25"	4.00"	3.50"
<b>E</b>	4.00"	6.00"	6.00"
<b>F</b>	N/A	2.00"	3.50"
<b>G</b>	N/A	4.00"	6.00"
<b>H</b>	1.00"	2.00"	1.20"
<b>I</b>	7.63"	11.00"	13.00"
<b>J</b>	9.63"	13.00"	15.50"
<b>K</b>	2.25"	3.00"	2.38"
<b>W*</b>	3LBS.	4LBS.	8LBS.



ITEM NUMBER	DESCRIPTION
03-501-06	PACK AND POP 18" ORANGE 3# 4" COLLAR W/ PLASTIC BASE AND LED, NO FEET
03-501-01	PACK AND POP 28" ORANGE 4# 6"/4" COLLAR W/ PLASTIC BASE, FEET, AND LED
03-501-02	PACK AND POP 28" ORANGE 4# 6"/4" COLLAR W/ PLASTIC BASE, FEET, AND LED (4 PACK)
03-501-03	PACK AND POP 28" ORANGE 4# 6"/4" COLLAR W/ PLASTIC BASE, FEET, AND LED (5 PACK)
03-501-04	PACK AND POP 30" ORANGE 8# 6"/4" COLLAR W/ RUBBER BASE AND LED
03-501-05	PACK AND POP 30" ORANGE 8# 6"/4" COLLAR W/ RUBBER BASE AND LED (5 PACK)
03-501-E5BG	28" PACK AND POP BAG ONLY
03-501-52BG	30" PACK AND POP BAG ONLY
03-500-80	POP-UP ECONOMY CONE 28" ORANGE 2# 6"/4" COLLARS W/ LIGHT
03-500-80-5	POP-UP ECONOMY CONE 28" ORANGE 2# 6"/4" COLLARS W/ LIGHT (5 PACK)
03-500-80NL	POP-UP ECONOMY CONE 28" ORANGE 2# 6"/4" COLLARS WITHOUT LIGHT
03-500-80KT	POP-UP ECONOMY CONE 28" ORANGE 2# 6"/4" COLLARS WITHOUT LIGHT (5 PACK)
03-500-80-B	28" POP-UP ECONOMY BAG ONLY W/ CORTINA LOGO

<b>COMPANY INFORMATION</b>		<b>UNLESS OTHERWISE SPECIFIED</b>		NAME	DATE		
<b>CORTINA SAFETY PRODUCTS GROUP</b> 10706 W. GRAND AVE. FRANKLIN PARK, ILLINOIS 60131 WWW.CORTINACO.COM		<b>DIMENSIONS ARE IN INCHES</b> <b>TOLERANCES:</b> FRACTIONAL ±1/32 ANGULAR: MACH ±.001 BEND ±.5° TWO PLACE DECIMAL ±.050 THREE PLACE DECIMAL ±.005		DRAWN	SMB		11/16/18
<b>PROPRIETARY AND CONFIDENTIAL</b>		<b>MATERIAL VARIOUS</b>		CHECKED	JP		
THE INFORMATION CONTAINED IN THIS DRAWING IS THE SOLE PROPERTY OF <b>CORTINA SAFETY PRODUCTS GROUP</b> . ANY REPRODUCTION IN PART OR AS A WHOLE WITHOUT THE WRITTEN PERMISSION OF <b>CORTINA SAFETY PRODUCTS GROUP</b> IS PROHIBITED.		<b>FINISH</b> PLASTIC BASE, CANVAS CONICAL COVER, LED ILLUMINATED		ENG APPR.	JMG		
		DO NOT SCALE DRAWING		MFG APPR.	JMG		
				Q.A.	MS		
				<b>COMMENTS:</b>		<b>COLLAPSIBLE CONES</b>  SIZE <b>A</b> DWG. NO. 11162018-1 REV. 1 SCALE:1:5 WEIGHT: SEE SPEC TABLE SHEET 1 OF 1	
				DRAWING IS FOR REPRESENTATION PURPOSES ONLY. DO NOT SCALE			